



AlphaGen™ Broadband Generator Systems



Cost effective extended runtime solution for communication networks.

Quiet operation, small size, and low profile allow for easier installation in populated areas.

Eliminates large quantities of batteries otherwise required for extended standby power.

Independent outdoor enclosure for collocation or optional remote location up to 150' from node.

Built-in safeguards to protect the system, operators and the public.

Safe unattended operation designed to UL2200, NFPA 37, 54, 58 & 70 standards.

The AlphaGen curbside generator system is specifically designed for outside plant communication networks. Every AlphaGen™ system incorporates industry leading power technology, including: natural gas or propane powered engine generators, exclusive audible noise baffling, remote status monitoring features, and durable weather resistant enclosures. Alpha offers a full line of AlphaGen™ systems specifically designed for easy integration with Alpha power systems.

AlphaGen 5.0kW Series

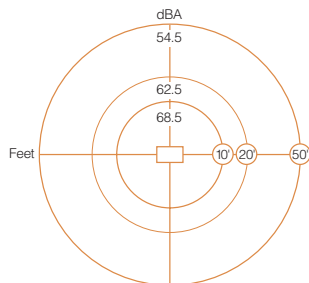
Specifications

DC Output Voltage	39.0V ± 0.5V @ no load 36V configuration 52.0V ± 0.5V @ no load 48V configuration
DC Output Load Regulation	0.5V
Output Current	39.0V @ 128A max. 52.0V @ 96A max.
Engine	398CC, Air cooled, Single OHV 10.5 HP rated (using natural gas fuel)
RPM: (Variable Speed)	2800 - 3600 RPM
Acoustical Noise	See charts
System Size	CE-3x CE-9x PN-4xL
Height:	44 in 52 in 32 in
Width:	26 in 26 in 36 in
Depth:	24 in 24 in 30 in
Weight:	383 lbs. 413 lbs. 390 lbs.
APU Fuel Consumption	
Natural Gas: 1000 BTU/Ft. ³	80 ft ³ /hr
Propane Gas: 2520 BTU/Ft. ³	1.10 gal/hr. 40 ft ³ /hr 4.62 lb/hr
Gas Inlet Pressure:	0.5 - 2 PSI Inlet Pressure <small>Note: Contact Alpha Technologies for low pressure operation under 0.5 PSI (14 inch Water Column).</small>
Ign Charger Voltage:	13.5 VDC
Ign Charger Current:	6A max.
Remote Interface Length:	100' max. <small>Note: Distance depends upon proper installation, de-rating and wire gauge. For greater distances, contact Alpha's Application Engineering Department.</small>
Agency Compliance:	UL2200, NFPA 37/54/58 and 70, CSA C22.2 FCC Class A
Fuel System, Controls & Monitoring:	The controls and fuel system meet applicable sections of NFPA 37, 54 and 58 for automatic unattended operation of remotely located generators. Full System Control and Status Monitoring included.
Sensors:	Gas Hazard, Pad Shear, Water Intrusion & Tamper
Safety Shutdowns:	<ul style="list-style-type: none"> • Low Oil Pressure • Over Temp • Over Speed • Over Crank • Low Fuel Pressure Shutdown (Propane only) • Gas Hazard (Propane or Natural Gas) • Water Intrusion • Pad Shear
Exterior Surface Temperature:	65°C max. (meets requirements of UL/CSA) Optional Feature: Cold Start Kit: Provides additional starting capability at low temperatures.

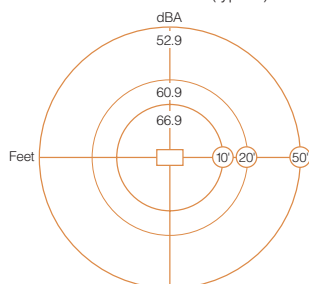
5.0kW Generator Sound Levels

Generator at 100% rated load.
Ambient background noise level at 45 dBA
All readings are 8 point averages.

Generator at 100% rated load.



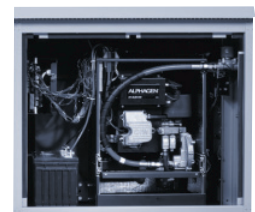
Generator at 70% rated load (typical)



CE-3x
5kW



CE-9x
5kW



PN-4xL
5kW